

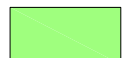



TOWNSHIP OF GUELPH / ERAMOSA ZONING BY-LAW

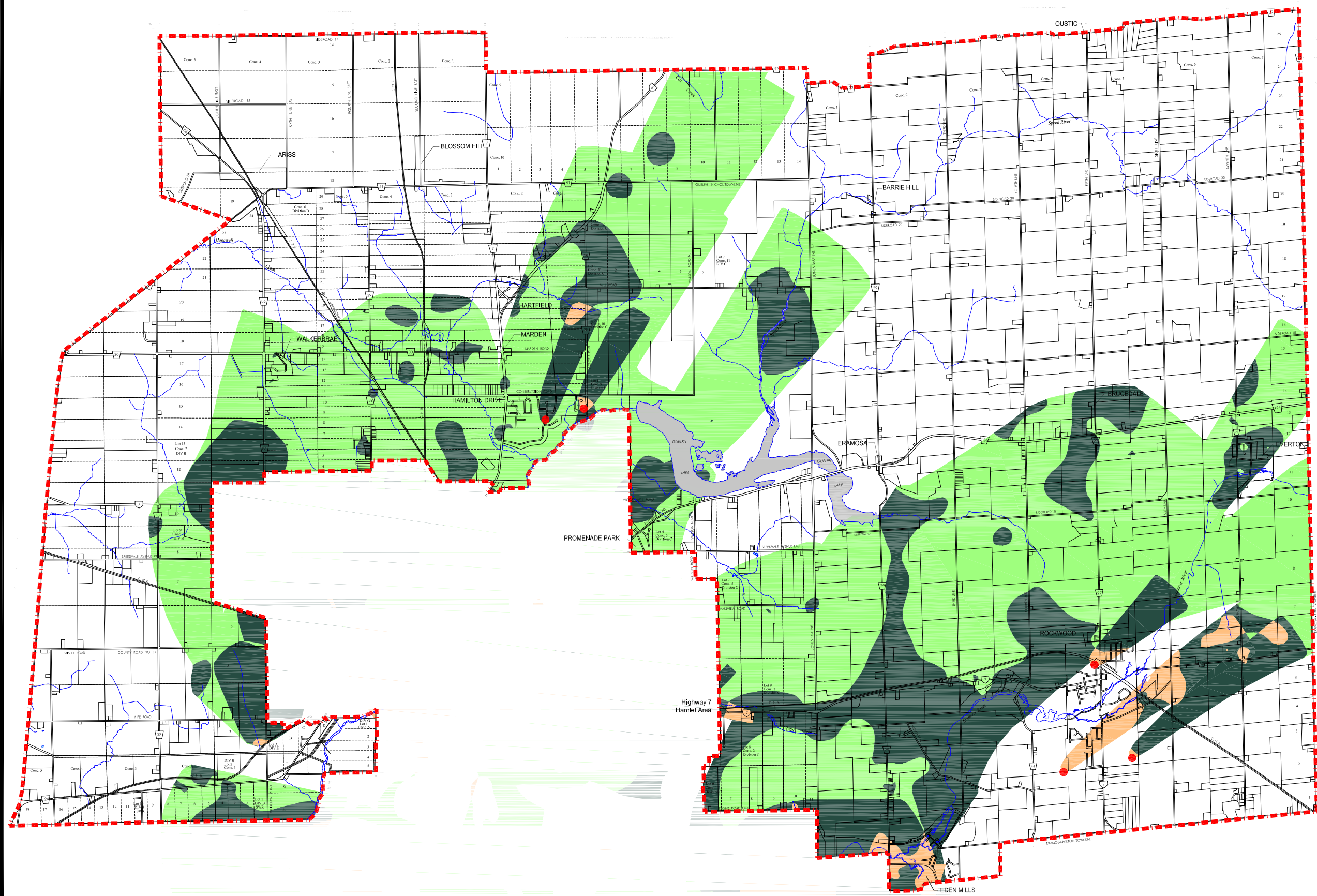
Schedule "B" to By-law Number 57/1999 & 34/95

Wellhead Protection Areas

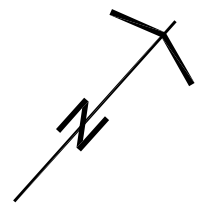
-  - Wellhead Protection Area 1
-  - Wellhead Protection Area 2
-  - Wellhead Protection Area 3
-  - Well Location

NOTE: THIS SCHEDULE TO BE READ IN CONJUNCTION WITH APPLICABLE SECTIONS OF THE BY-LAW. PRODUCED BASED ON APPROVED COUNTY OF WELLINGTON OFFICIAL PLAN, SCHEDULE B3, DATED FEBRUARY 22, 2007

CONSOLIDATED TO DECEMBER 31, 2009



Township of Erim



Scale: 1:75,000

CREWSON'S CORNERS