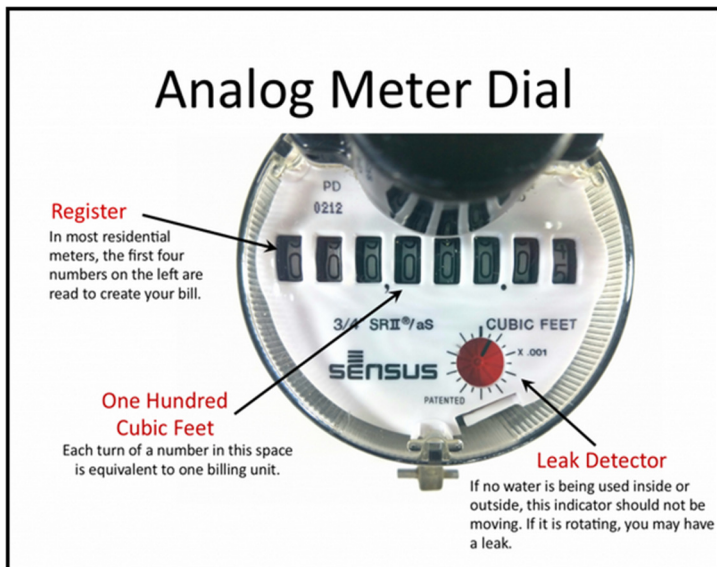


Below are examples of the most installed residential water meters. The meter is read by either a remote reader on the outside of your home or by radio frequency. These readings are used to calculate your water bill.



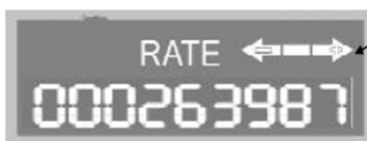
We are replacing water meters that have reached the end of their life cycle.

If you have received a letter or have received a message by phone, please contact the Public Works Water Department to arrange for a water meter replacement.



To read the meter, open the flip lid to display the current reading. After about 12 seconds the meter then starts to cycle through displaying other measurements/readings. If you miss the read in the first 12 seconds, simply close and open the lid for the display cycle to start again from the meter reading.

The 9 digit LCD displays your meter reading in cubic meters  
The last 4 digits of the reading are decimal points.  
(E.g. 26.3987 cubic meters)  
(decimal will be displayed)



- Flow Indicator**  
– displays direction of water flow
- ◆ ON – water in use
  - ◆ OFF – water not in use
  - ◆ Flashing – water is running slowly
  - ◆ (-) – indicates reverse flow
  - ◆ (+) – indicates forward flow

Water consumption on your bill includes any water passing through the water meter. Tracking your water consumption will save money!!

Be diligent in checking your water meter to see how your consumption is going. Most water leaks are not obvious. Best not to be surprised when you receive your water bill.