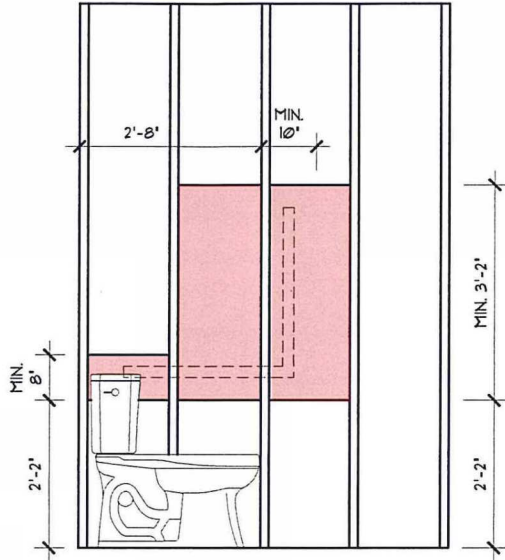
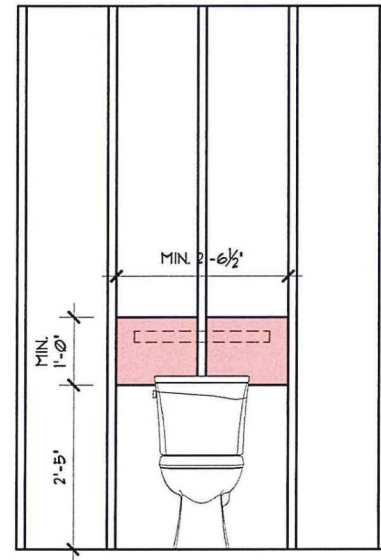


# Stud Wall Reinforcement

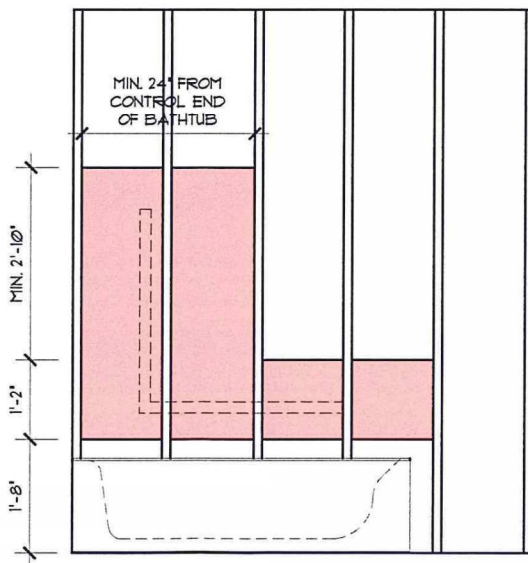
## OBC 2012, DIV. B 9.5.2.3



- Future Grab Bar Shall Be:  
L-Shaped, and shall be
- Vertical component
    - 30' in length, and
    - mounted 6' from the end of the toilet bowl
  - Horizontal Component
    - 30' in length, and
    - mounted approximately 30' above the floor



- Future Grab Bar Shall Be:
- Minimum 24' in Length, and
  - Mounted
    - 33' - 36' above the floor (tankless), or
    - 6' above the tank



- Future Grab Bar Shall Be:
- Vertical Component
    - 36' in length, and
    - Mounted 12' - 18' from the control end of the bathtub
  - Horizontal Component
    - 36' in length, and
    - Mounted 6' - 8' above the rim of the bathtub